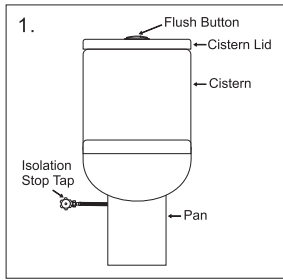
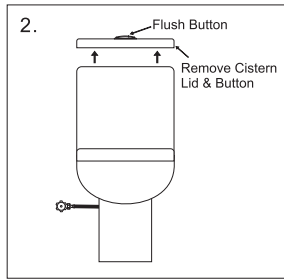


Kinetic

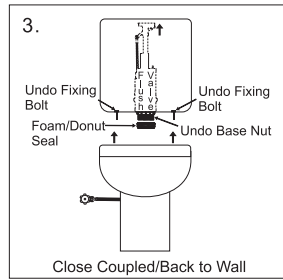
Cistern Outlet Valve Plumbers Installation Guide



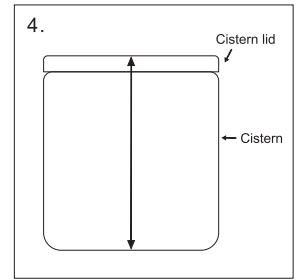
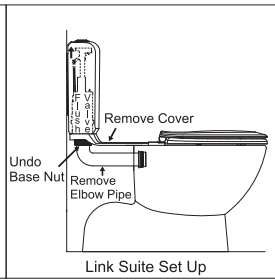
① Turn off the water supply at the isolation stop tap. Flush the toilet to remove the water from the cistern.



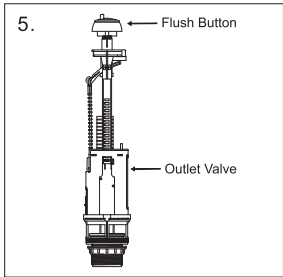
② Remove the Cistern Lid. You may need to unscrew the flush button on some cisterns.



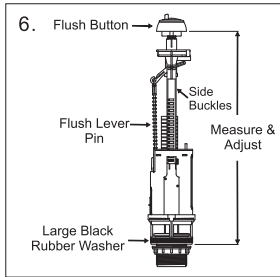
③ Remove the old flush valve. You may need to remove the cistern from the Pan. On a link suite, you need to remove the elbow pipe and then undo the base nut.



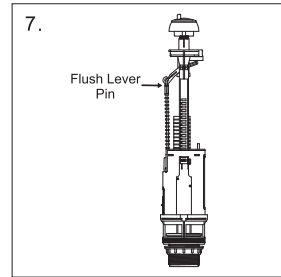
④ Measure the distance from the top of the Cistern Lid to the base of the Cistern. This measurement will be needed in step 6.



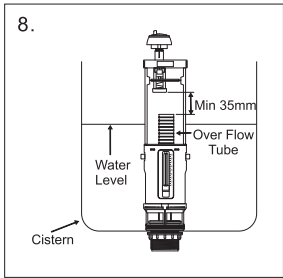
⑤ Install the Flush Button onto the Outlet Valve.



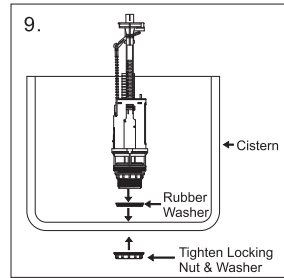
⑥ Take the measurement from step 4 and adjust the height of the Outlet Valve to the required height. Note – Take your measurements from the base of the large Rubber Washer to the base of the Button where it will be exposed on the Cistern Lid. You adjust the height by moving the Side Buckles. Disconnect the Flush Lever Pin for this step.



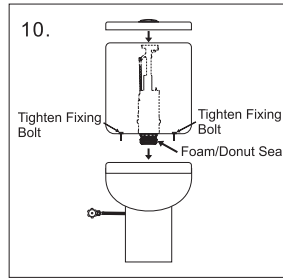
⑦ Now connect the Flush Lever Pin and set it at the same number that the Side Buckles have been set to. If trimming is required then make the cut 2 levels below the selected number. Example – If the Side Buckles have been set to 11, then you need to set the Flush Lever Pin to 11 and if trimming is required trim at number 13.



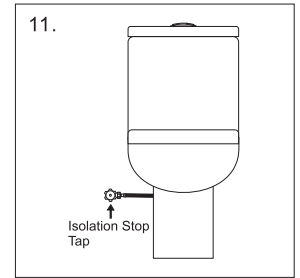
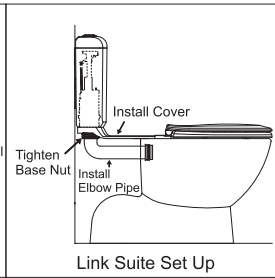
⑧ Test the function of the Outlet Valve by pressing the Flush Buttons while its not installed to see if the Over Flow Tube needs to be trimmed, ensure you cut it above the water level and there is a 35mm clearance. You can remove the Side Buckles & Flush Lever Pin for trimming.



⑨ Remove the Flush Button from the Outlet Valve then install the Outlet Valve into the Cistern. Ensure the large Rubber Washer is installed on the inside of the Cistern.



⑩ Reinstall the cistern onto the Pan (if removed). Tighen all Locking Nuts to ensure there are no leaks, then install the cistern lid and button.

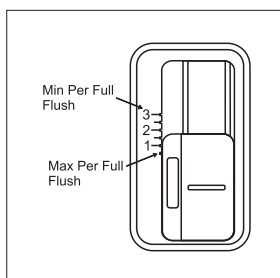


⑪ Turn on the water supply and check all connections for leaks. Do several flush tests.

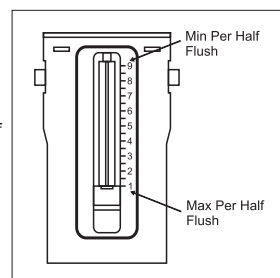
Trouble Shooting

- * Button won't screw down far enough – You need to lower the Side Buckles and the Flush Lever Pin. Refer to step 6.
- * Button is unable to screw into the Outlet Valve when the Cistern Lid is installed – You need to raise the Side Buckles and Flush Lever Pin. Refer to step 6.

* Adjusting the Full Flush rate – You can change the setting up or down to control the amount of water per flush as shown in the diagram. Maximum Full Flush set to the lowest point. Minimum Full Flush set to the highest point.



* Adjusting the Half Flush Rate - You can change the setting up or down to control the amount of water per flush as shown in the diagram. Maximum Half Flush set to the lowest point. Minimum Half Flush set to the highest point.



Warranty Guidelines

This Kinetic product comes with a guarantee that cannot be excluded under the Australian Consumer Law. You are entitled to a replacement or refund for a major failure and for compensation for any other loss or damage. You are also entitled to have the goods repaired if the goods fail to be of acceptable quality and the failure does not amount to a major failure. This warranty covers material and workmanship defects for domestic use only. The following is not covered by warranty - wear and tear to working parts, misuse/abuse and discolouration due to exposure to sunlight or cleaning chemicals. Please keep your receipt for proof of purchase.