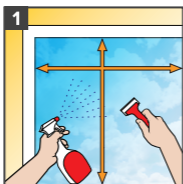
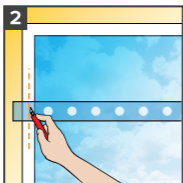


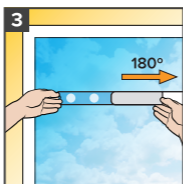
Installation



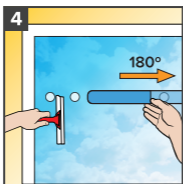
Thoroughly clean glass using an ammonia-free cleaner, scraper & lint-free cloth. Measure area to be covered.



On a clean flat surface, cut decal 20-25mm wider than required on each side to ensure coverage.

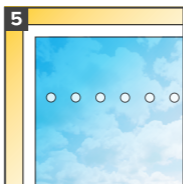


Slowly and gently peel away backing PAPER at a 180° angle exposing the adhesive side. Ensure the frosted decal **REMAINS ON THE CLEAR SIDE** of film.



Apply adhesive side to glass in desired location, pressing firmly to ensure adhesion.

Use an applicator tool to remove creases and air bubbles. Gently peel away clear film layer at a 180° angle.



Once clear backing film is removed, press decal firmly and rub out any remaining air bubbles. Allow to dry for 24 hours.