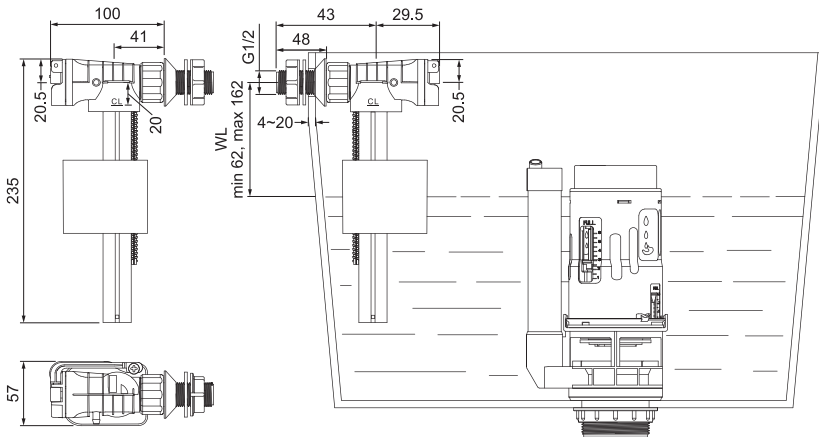


SIDE ENTRY FILL VALVE INSTALLATION GUIDE



Unit: mm

IMPORTANT

1. Please read the instructions carefully to avoid personal injury or damage to the product.
2. These instructions are compiled with the latest manufacturing information. We reserve the right to make changes to specifications without prior notice.
3. The critical level mark (identified by "CL" on the valve body) should be at least 25.4mm (1 inch) above the top of the overflow pipe.
4. We shall not be liable for any faults caused by modification to this product with third-party parts.

Operating Specifications

Water temperature: 2°C - 45°C

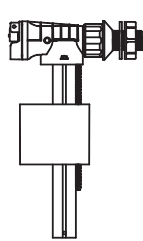
Water pressure: 20kpa - 800kpa

WARNING

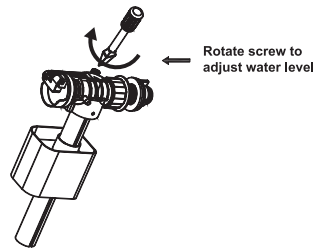
Do not use or allow any chlorine or chemically related products inside the cistern. This will result in damage of components and may cause flooding and void warranty. Do not over-tighten fixing nuts as this may crack the cistern.

1. **Preparation:** Ensure cistern is clean and free from debris or other impurities. Ensure inlet line is adequately flushed.

2. Water Level Adjustment

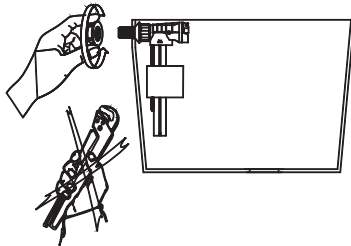


Thoroughly inspect product to ensure there are no defects or missing parts

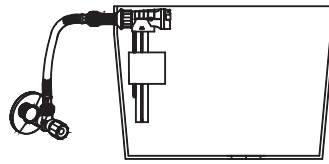


Rotate the screw to raise or lower the float to adjust water level to desired position. The higher the float, the greater the fill volume.

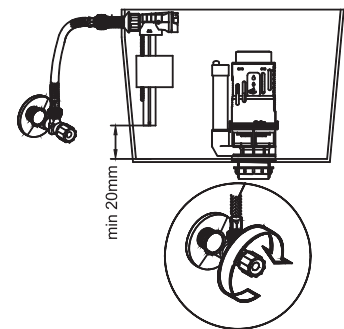
3. Fill Valve Installation



1. Install valve into the cistern and firmly tighten. Do not use a spanner.

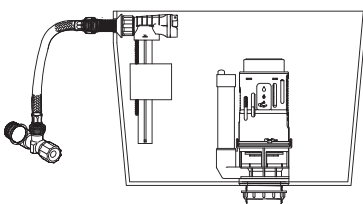


2. Ensure water supply (cistern cock) meets water pressure requirements.

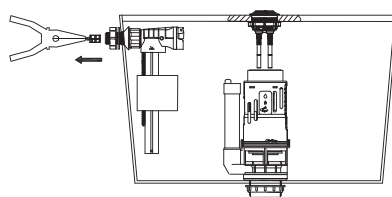


3. If making adjustments to the height of the valve body, ensure water supply is turned off.

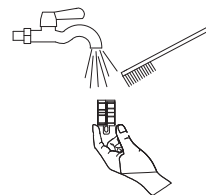
4. Fill Valve Cleaning



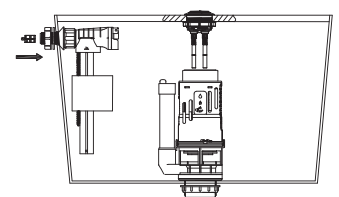
1. Turn off water supply before cleaning filter. Remove hose connection from the base of the valve.



2. Remove filter from the inlet.



3. Clean filter with warm water and a soft brush. Do not use chemicals.



4. Re-install filter and connect water supply.