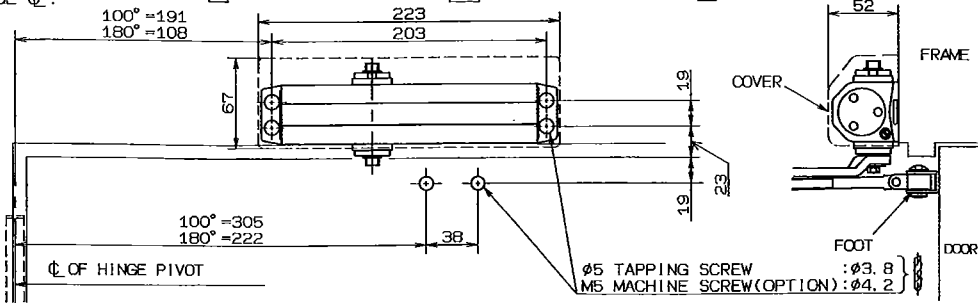


INSTALLATION INSTRUCTIONS

TOP JAMB APPLICATION

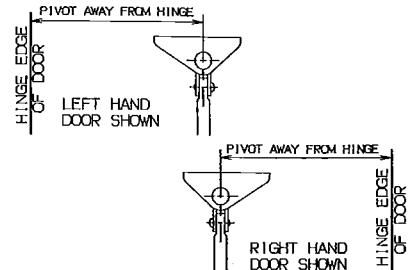
CLOSER MOUNTED ON FRAME ON STOP SIDE OF DOOR

LEFT HAND DOOR ILLUSTRATED. SAME DIMENSIONS APPLY FOR RIGHT HAND DOOR—MEASURED FROM HINGE ϕ .

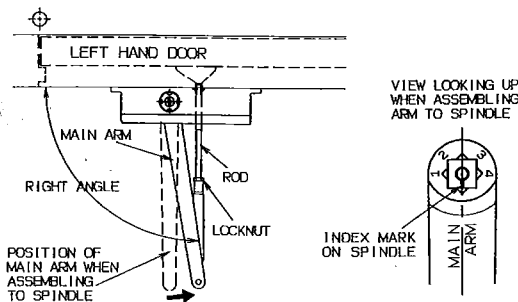


- A**
1. MARK LOCATION OF ATTACHING SCREW ON DOOR AND FRAME AS SHOWN ABOVE. DRILL SIZES TO BE USED AS SHOWN.
 2. ATTACH CLOSER TO FRAME WITH SHORT END OF CLOSER FACING TOWARD HINGE.

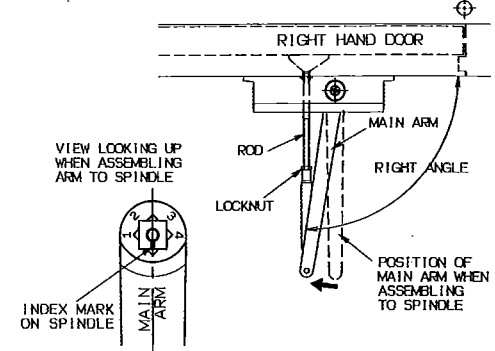
- B**
- ATTACH FOOT TO FRAME WITH PIVOT AWAY FROM HINGE AS ILLUSTRATED BELOW.



- C**
- ASSEMBLE MAIN ARM TO CLOSER WITH INDEX MARK ON SPINDLE ALIGNED WITH AXIS OF ARM AS ILLUSTRATED BELOW. ATTACH ARM WITH WASHER AND SCREW. TIGHTEN SECURELY USING SPANNER.



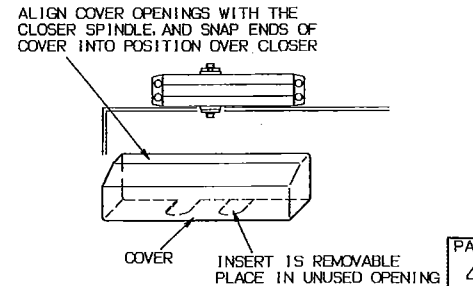
- D**
- TIGHTEN LOCKNUT SECURELY WHEN ROD IS AT RIGHT ANGLE TO DOOR. SEE ILLUSTRATION BELOW.



- SECURE MAIN ARM TO FRAME ARM AT ELBOW WITH SCREW AND TIGHTEN.

- E**
- ADJUST AND REGULATE DOOR CLOSER AS DIRECTED AT PAGE 1 FOR SPEED AND BACKCHECK.

- F**
- INSTALL COVER AS FOLLOWS (Applicable to D-1550 Series only)



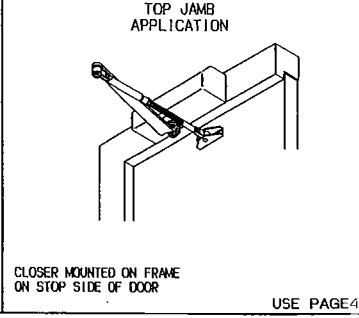
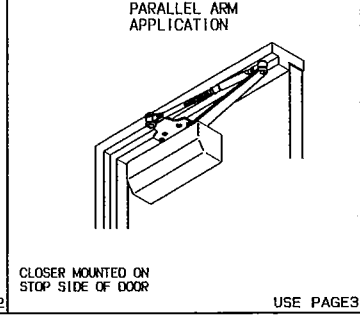
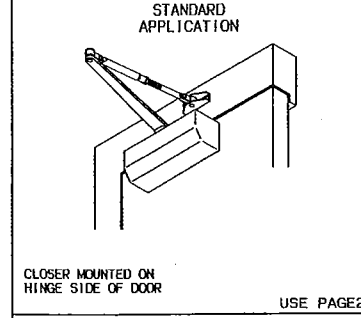
PAGE 4

RYOBI® DOOR CLOSER

D-1500/D-1550/D-1500BC/D-1550BC SERIES INSTALLATION INSTRUCTIONS

42181

SELECT PROPER APPLICATION FROM ILLUSTRATIONS BELOW. THEN FOLLOW INSTALLATION INSTRUCTIONS ON GIVEN PAGE.



PERIODIC MAINTENANCE

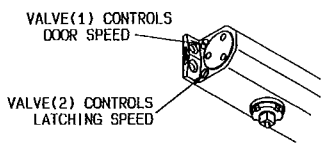
NONE REQUIRED OTHER THAN TO CHECK SECURITY OF FIXINGS ON REGULAR BASIS.

	Max. Door Width (mm)	Max. Door Weight (kg)
D-1503/D-1503BC/D-1553/D-1553BC	950	65
D-1504/D-1504BC/D-1554/D-1554BC	1050	85

FINAL ADJUSTMENT AND REGULATING PROCEDURES

REGULATING DOOR SPEED AND LATCHING SPEED

TURN SPEED REGULATING SCREW CLOCKWISE TO SLOW DOWN OR COUNTERCLOCKWISE TO SPEED UP DOOR MOVEMENT.

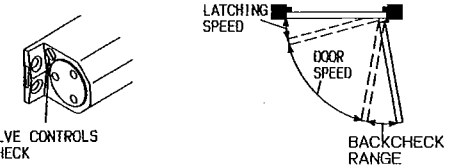


CAUTION: Take care when adjusting valves to ensure that they are not wound counterclockwise too far as this could disengage them and allow fluid to be lost.

REGULATING BACKCHECK (D-1500BC/D-1550BC SERIES ONLY)

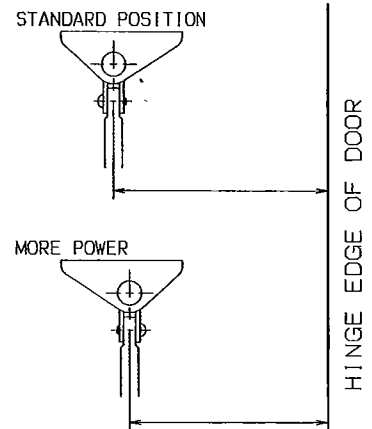
THE INTENSITY OF BACKCHECK ACTION IS REGULATED BY VALVE SHOWN. TURN CLOCKWISE TO INCREASE OR COUNTERCLOCKWISE TO DECREASE BACKCHECK.

CAUTION: Set valve for a slight cushioning effect. It is damaging to the closer if the checking action is too abrupt. Backcheck should never be used in lieu of a door stop.



CAUTION: Take care when adjusting valve to ensure it is not wound counterclockwise too far as this could disengage it and allow fluid to be lost.

ADJUSTING FOOT FOR ADDITIONAL CLOSING POWER



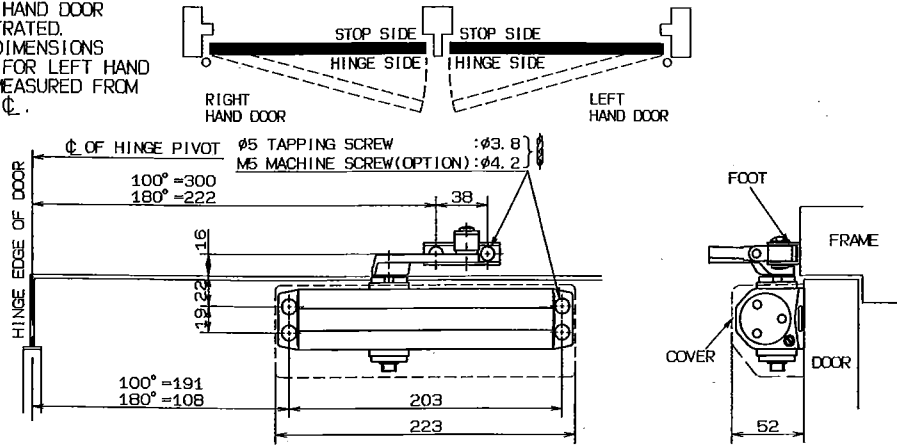
PAGE 1

INSTALLATION INSTRUCTIONS

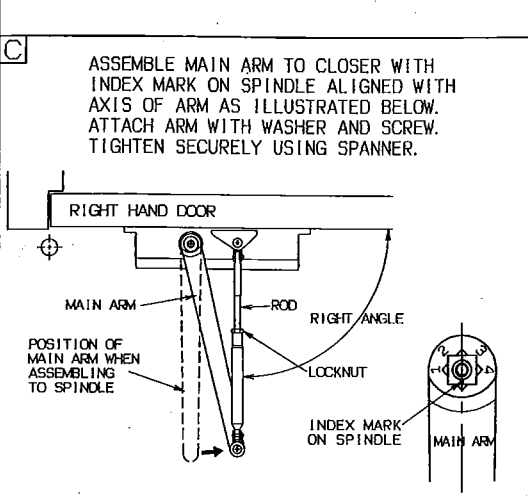
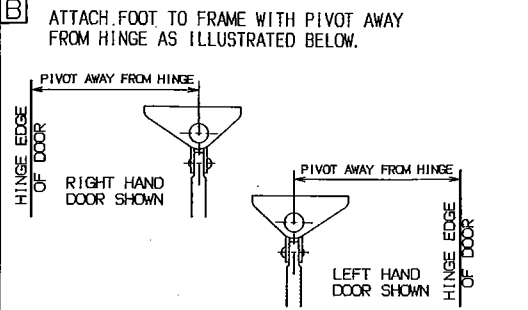
STANDARD APPLICATION

CLOSER MOUNTED ON HINGE SIDE OF DOOR

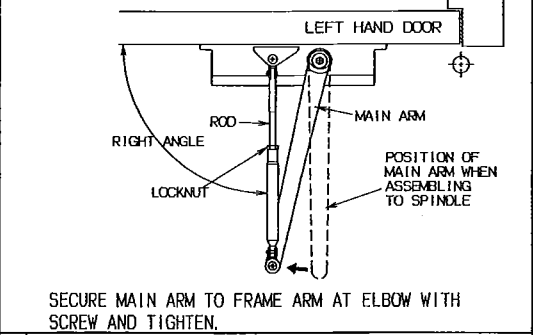
RIGHT HAND DOOR ILLUSTRATED. SAME DIMENSIONS APPLY FOR LEFT HAND DOOR—MEASURED FROM HINGE ϕ .



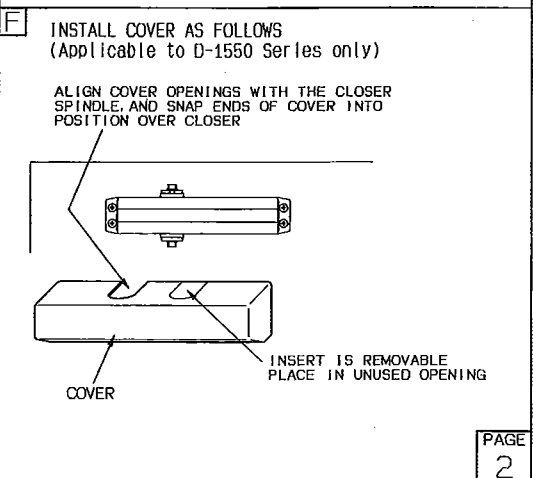
- A** 1. MARK LOCATION OF ATTACHING SCREWS ON DOOR AND FRAME AS SHOWN ABOVE. DRILL SIZES TO BE USED AS SHOWN.
2. ATTACH CLOSER TO DOOR WITH SHORT END OF CLOSER FACING TOWARD HINGE.



- D** TIGHTEN LOCKNUT SECURELY WHEN ROD IS AT RIGHT ANGLE TO DOOR. SEE ILLUSTRATION BELOW.



- E** ADJUST AND REGULATE DOOR CLOSER AS DIRECTED ON PAGE 1 FOR SPEED AND BACKCHECK.

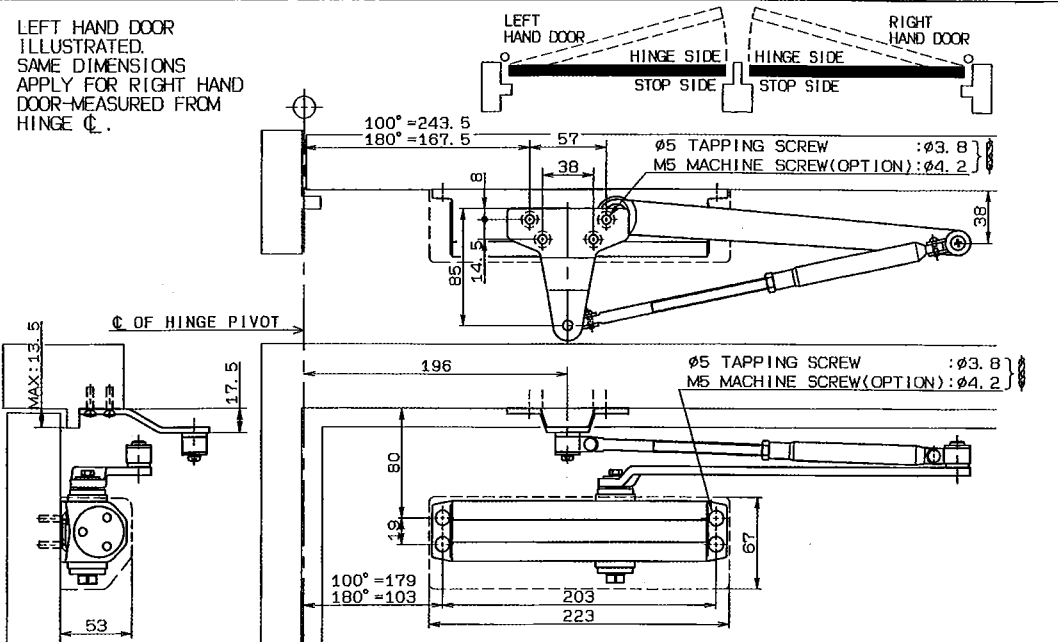


INSTALLATION INSTRUCTIONS

PARALLEL ARM APPLICATION

CLOSER MOUNTED ON STOP SIDE OF DOOR

LEFT HAND DOOR ILLUSTRATED. SAME DIMENSIONS APPLY FOR RIGHT HAND DOOR—MEASURED FROM HINGE ϕ .



- A** 1. MARK LOCATION OF ATTACHING SCREWS ON DOOR AND FRAME AS SHOWN ABOVE. DRILL SIZES TO BE USED AS SHOWN.
2. ATTACH CLOSER TO DOOR AND PARALLEL ARM BRACKET TO FRAME (LONG END OF CLOSER TOWARD HINGE).

- C** PARALLEL ARM BRACKET FOR PARALLEL ARM APPLICATION REMOVE FOOT BRACKET AND REPLACE WITH PARALLEL ARM BRACKET USING SCREW AND WASHER PROVIDED.

- B** ASSEMBLE MAIN ARM TO CLOSER WITH INDEX MARK ON END OF SPINDLE 45° FROM AXIS OF ARM, AS ILLUSTRATED BELOW, USING A WRENCH ON THE BOTTOM SPINDLE TO ROTATE SPINDLE INTO POSITION. ATTACH ARM TO SPINDLE WITH WASHER AND SCREW.

- D** ADJUST AND REGULATE DOOR CLOSER AS DIRECTED AT PAGE 1 FOR SPEED AND BACKCHECK.

