

# mīstral

## Handheld Steam Cleaner



## Instruction Manual

Model: BSN595

# Important Safeguards

**When using electrical appliances, in order to reduce the risk of fire, electric shock and/or injury, these basic safety precautions should always be followed:**

## For Your Safety

***Read all instructions carefully, even if you are familiar with the appliance.***

- To protect against the risk of electric shock, DO NOT IMMERSE any part of this appliance in water or any other liquid.
- The steam cleaner should always be switched off before connecting or disconnecting from the power supply. To unplug, grasp plug and pull from the power outlet. Never pull by the power cord or carry the steam cleaner by the power cord.
- Do not operate the steam cleaner with a damaged power cord or plug. Never use the steam cleaner if it is damaged in any way.
- Do not attempt to repair or disassemble the appliance. There are no user serviceable parts.
- This appliance is not intended for use by persons (including children) with reduced physical, sensory and mental capabilities, or lack of experience and knowledge, unless they have been given supervision or instruction concerning use of the appliance by a person responsible for their safety.
- Children should be supervised to ensure that they do not play with the appliance.
- Care when using the appliance due to the emission of steam.
- Do not direct steam towards people, animals or other electrical products.
- If you are leaving the steam cleaner momentarily, always switch it off and remove the plug from the wall socket.
- Do not place any part of this appliance on or near a hot gas or electric burner.
- Burns can occur from touching hot parts, hot water or steam. Be careful when you turn the steam cleaner.
- Do not turn on power supply until the tank is filled with the appropriate amount of water.

- To avoid an overloaded circuit, do not operate another high current appliance on the same electrical circuit.
- Do not allow the power cord to close hot surfaces and always ensure the power cord is adequately constrained. Let the steam cleaner cool down completely before storing it away.
- Always switch off and disconnect the power plug from the wall socket before filling the steam cleaner with water or pouring the remaining water out. It is recommended that the water be emptied after every use.
- Do not use the steam cleaner for anything other than its intended use. This product is intended for household use only.
- Do not add vinegar, perfumed water or any chemical-based liquids into the appliance as doing so can seriously damage the steam cleaner.
- Do not use it outdoors.

## Warning

If the power cord is damaged, the power cord must be replaced by the manufacturer, its service agent or similarly qualified persons in order to avoid hazards.

The appliance should be switched off and unplugged immediately once steam is no longer being produced.

The appliance is equipped with a safety pressure relief valve integrated into the safety cover. This valve will release steam only if the internal pressure rises above the normal operating level. Switched off and unplugged the appliance immediately in this occasion.

Never operate the appliance without the safety cover in place. If the safety pressure relief valve activates during every use, discontinue operation and have the appliance inspected by a qualified service agent.

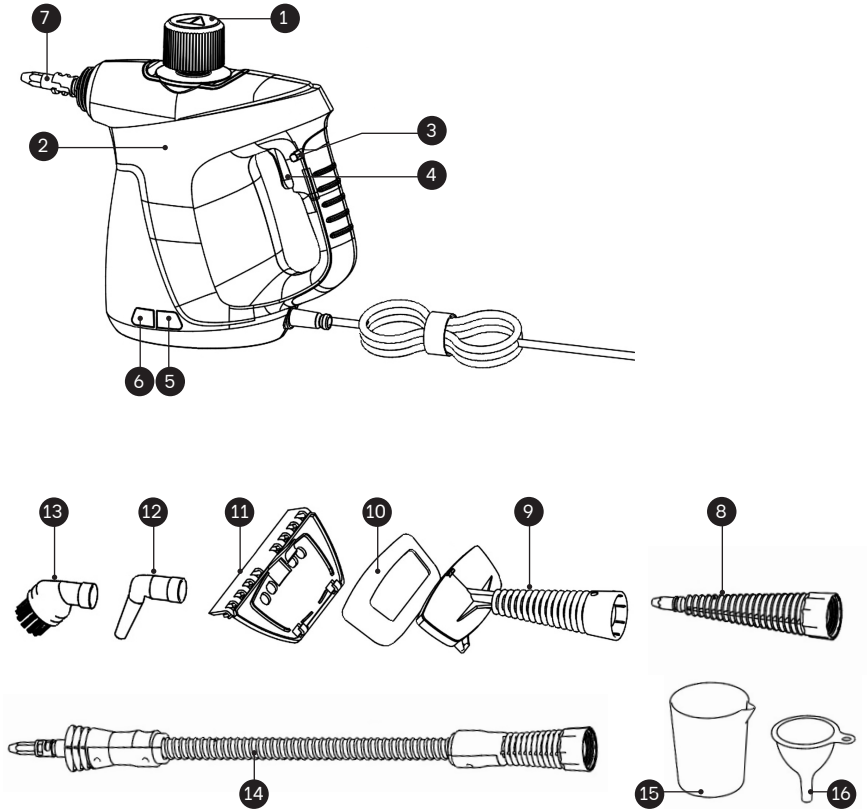


**CAUTION: HOT STEAM! Be careful of scalding due to high temperature steam.**

This product has not been designed for any uses other than those specified in this booklet.

## Save These Instructions

# Features of Your Handheld Steam Cleaner



- 1. Safety Cover
- 2. Main Unit
- 3. Unlock Button
- 4. Steam Button
- 5. Power Indicator Light
- 6. Working Indicator Light
- 7. Nozzle

- 9. Steamer Shelf
- 10. Steamer Cloth
- 11. Window Cleaning Accessory
- 12. Angled Nozzle
- 13. Nylon Brush
- 14. Flexible Extension Nozzle
- 15. Measuring Cup
- 16. Funnel

# Getting to Know Your Handheld Steam Cleaner

Congratulations on the purchase of your new Handheld Steam Cleaner.

Before using, it is important that you read and follow the instructions in this booklet, even if you feel that you are quite familiar with this appliance. Find a place to keep this booklet handy for future reference.

Your attention is drawn to the section dealing with "Important Safeguards."

This appliance has been designed to operate from a standard domestic power outlet. It is not intended for industrial or commercial use.

## Product Characteristics

### 1. Suggested Uses

The high temperature and high-pressure steam can be used for cleaning away dirt, grease, stains, kill bacteria and germs on most surfaces.

With automatic heating control and being able to generate steam continuously, it will make cleaning easy.

Cleaning with high temperature and high-pressure steam, with no added chemical agents, makes this appliance environmentally friendly.

### 2. Higher Safety

This appliance is designed to prevent heating of the water tank after the water in the tank has been used up.

The appliance will automatically disconnect the power supply to the heating element and thus prevent empty heating.

With a highly sensitive thermostat, high steam temperature is available, ensuring disinfection and sterilisation.

The pressure safety valve has an automatic pressure release function.

If there is higher than normal steam pressure in the tank, the valve will automatically open and release the pressure.

### 3. Durable

The appliance is designed with an aluminum alloy die cast boiler tank which can resist high pressures ensuring a long service life.

The high strength plastic body is made from high quality material ensuring a long service life.

### 4. Energy Efficient

With an integrated design of specially constructed heating tubes and boiler tank, an overall heating solution is provided creating high heating efficiency and energy saving.

The body shell structure effectively prevents heat loss which aids in being environmentally friendly and energy efficient.

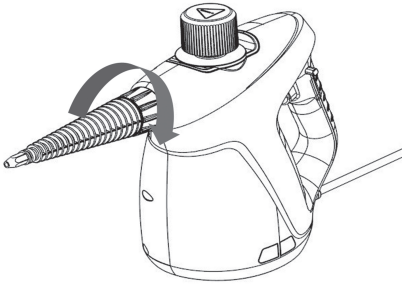
### 5. Easy to Use

With the comprehensive cleaning accessory kit supplied, the components can be assembled and disassembled easily depending on your needs.

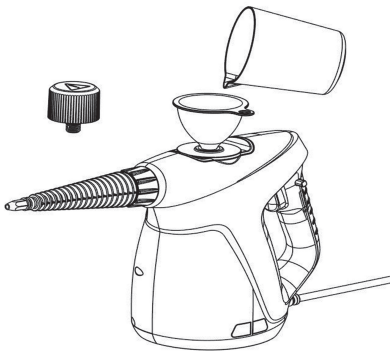
# Before First Use

## How to assemble your Handheld Steam Cleaner

1. Unpack the product, check the accessories supplied with the product and make sure that the product and accessories are not damaged.
2. Place the steam cleaner on a level platform, install the extension nozzle to the main unit and screw it in clockwise.



3. Unscrew the safety cover, add 250mL of water to the main unit using a measuring cup and funnel.



**Note: Do not overfill the tank as some air space must be left in the tank for correct operation. Do not add less than 100 mL of water to prevent insufficient steam generation. Before adding water, ensure the appliance has cooled completely to avoid scalding from escaping steam.**

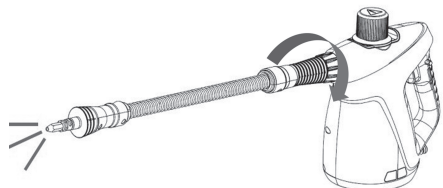
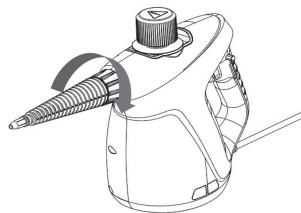
4. After adding water, replace the safety cover and turn it clockwise until it is fully tightened and cannot be turned any further. This indicates the cover has been correctly installed, and you may proceed to the next step.



## How to install the attached accessories

1. Install the extension nozzle & flexible extension nozzle.

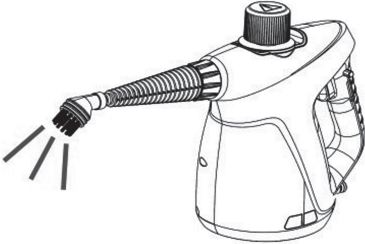
Hold the outer section of the extension nozzle/flexible extension nozzle, push it onto the short nozzle on the main unit all the way up and then screw clockwise to fit. Installation of the flexible extension nozzle is carried out with the same procedure.



To remove the extension nozzle/flexible extension nozzle, rotate the nozzle counterclockwise and then it can be pulled out.

### 2. Install the angled nozzle and nylon brush

Angled nozzle and nylon brush may be used with short nozzle, extension nozzle, and flexible extension nozzle. Push all the way to ensure that angle nozzle and nylon brush are securely fitted in the attached nozzle.



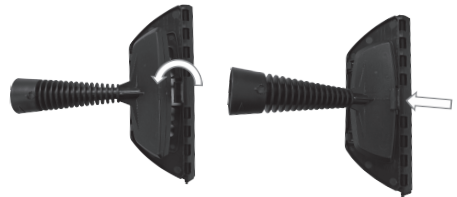
### 3. Installation of window cleaning accessory

**Note: For safety, the Steamer Shelf must only be used in conjunction with Flexible Extension Nozzle. Do not connect it directly to the steamer's short nozzle.**

Take the window cleaning accessory and locate the two small hooks into the two suspension lugs on the back of the steamer shelf.



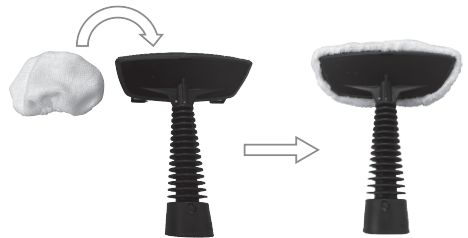
Push hard until they clip together and then swing the window cleaning accessory up and lock the hook over the front of steamer shelf body.



To remove the window cleaning accessory, pull the hook back to release it then unhook from the lugs.

### 4. Installation of steamer cloth

Take the cloth and stretch it over the bottom face of the steamer shelf until it fits neatly.



To remove the steamer cloth, gently pull the side down and the pull off.

# Functions of Accessories

## General use, disinfecting and sterilizing

With any of the “Nozzle” attachments fitted, aim the nozzle at the position that needs disinfection and squeeze the steam power button. High-temperature steam will kill most bacteria.

## Steaming clothes/fabric

**Note: Read the garment care label before proceeding to ensure steaming is permissible. Allow clearance around the hanging clothing to avoid steam meeting surrounding objects.**

Install the steamer cloth onto the steamer shelf, then attach onto the end of the flexible extension nozzle. Next, attach onto the Steam Unit. Place the steamer cloth flat onto the hung clothes and squeeze the steam trigger.

## Cleaning windows

**Note: Do not spray hot steam onto cold windows as the glass may crack.**

Install the cleaning window accessory onto the steamer shelf, then attach onto the end of the flexible extension nozzle. Press the window accessory rubber strip onto the window and squeeze the steam trigger. Pull the window accessory down the glass to wipe off the dirty water as the steam loosens the dirt. Finally, finish cleaning up with a clean cloth.

## Cleaning tiles

Install the extension nozzle/flexible extension nozzle. Then install angle nozzle or nylon brush. Aim the nozzle at the tiles and press down the steam button to remove the dirt and stains in corners and on the floor.

# How to Use Your Handheld Steam Cleaner

## Operation

1. Check the water in the unit, avoid overfilling the tank, as this can compromise steam generation and may lead to dangerously high pressure.
  2. Refer to section “Functions of Accessories” for the selection of accessory, and to section “How to install the attached accessories” for method of assembly. Attach your required accessory to the main unit.
  3. Check the power supply and socket, confirm they comply with the requirements given in this Instruction Manual.
  4. Plug in to the power point and switch it on. The Power Indicator Light will be Red.
  5. After about 3 minutes, the Working Indicator Light will be Green, press the unlock button and then press the steam button to spray steam for cleaning. Release the steam button to stop spraying steam.
  6. For safety, always lock the steam release button when not using your handheld steam cleaner. Slide the unlock button from right to left to disable the power release button during heating or storage. To use steam, slide the lock from left to right to unlock it.
- Note: Gently squeeze the steam power button and check whether steam jets out of the nozzle. DO NOT aim the spray nozzle at other people, animals or objects. During operation, the appliance body must not be inclined at more than 45 degrees. Otherwise, boiling water will be sprayed out together with steam, this can cause serving burns.**
7. After finishing using the appliance, unplug from the power point. Allow the appliance to cool it down for about 10 minutes.

## WARNING:

**Always ensure to disconnect the plug from the power point, let cool and release all internal pressure before changing attachments as the nozzle will be extremely hot.**

**The safety cover cannot be opened during operation or immediately after use. Only once the product has cooled sufficiently for the internal pressure to return to pre-use levels may the safety cover be opened. Thereafter, any remaining water may be drained, or additional water added for continued operation of the appliance.**

**After each cleaning cycle, ensure that all residual water within the appliance is completely drained to prevent residual steam from escaping during subsequent use.**

## Refill Water

1. Unplug the power cord and disconnect the power supply.
2. Press down the steam button to release the pressure until no steam is injected out.
3. Slowly unscrew the safety cover but do not remove it, residual steam will be discharged slowly until no steam comes out. Then place the appliance in a cool place to cool it down. Finally, completely remove the safety cover.
4. Use the funnel and measuring cup to refill water into the tank.
5. Re-install the safety cover onto the appliance body and tighten it in position.

## Care and Cleaning

1. After the machine is used, turn off and unplug appliance prior to cleaning and let it completely cool.
2. Do not immerse the appliance in water, or any other liquid. Rinse out the water chamber with clean fresh cold water.
3. Do not allow detergents or solvents etc. to enter the boiler as this will damage the appliance.
4. Wipe the outer surface of the appliance with a soft damp cloth and dry with a dry towel.
5. Do not use abrasive creams, solvents, steel wool or scouring pads as they will damage the finish.
6. All removable accessories should be detached and cleaned thoroughly in warm, soapy water at regular intervals.
7. Do Not wind the power cord around the appliance body as this will damage the cord over time. Simply loop the cable and place it next to the appliance.
8. Before storage, ensure all water has been drained from the product's water tank.
9. Store the appliance safely and in a dry place.

## Technical Specification

Rated Voltage: .....220-240V~ 50Hz  
Power: .....1000W  
Waterproof Level: .....IPX4  
Water tank capacity: .....Max. 250ml  
Steam pressure: .....2.5-3.5bar

**Note: As a result of continual improvements, the design and specifications of the product within may differ slightly to the unit illustrated from the packaging.**

# Notes

# Warranty Conditions for purchase in Australia & New Zealand

Any claim under this warranty must be made within 2 years of the date of purchase of the product. To make a claim under the warranty in Australia, take the product (with proof of purchase) to any Bunnings store (see [www.bunnings.com.au](http://www.bunnings.com.au) in Australia or [www.bunnings.co.nz](http://www.bunnings.co.nz) in New Zealand for store locations).

GSM Retail Group bears reasonable, direct, expenses of claiming under the warranty in Australia. You may submit details and proof to a Bunnings store for consideration or contact our service agent below.

This warranty is provided in addition to other rights and remedies you may have under law: our goods come with guarantees which cannot be excluded under the Australian Consumer Law (if purchased in Australia) or the Consumer Guarantees Act 1993 (if purchased in New Zealand). You are entitled to replacement or refund for a major failure and to compensation for other reasonably foreseeable loss or damage. You are also entitled to have the goods repaired or replaced if the goods fail to be of acceptable quality and the failure does not amount to a major failure.

The warranty excludes damage resulting from product misuse or product neglect. The warranty covers domestic use only and does not apply to commercial applications.

This warranty is given by GSM Retail Group

ABN: 53007682475

For Warranty and technical queries: 1300 373 199 Aus Or 0800 764 912 NZ

## Warranty Exclusions

Damage to the base or diffuser or any part through accident, misuse or negligence.

**G | S | M**

Gerard Sourcing & Manufacturing

**GSM Retail Group**

**Consumer Service Centre :**

**Aus: 1300 373 199**

**NZ: 0800 764 912**

GSM Retail Group has a policy of continual improvement throughout the product range.  
As such the unit contained within may differ slightly from the unit illustrated on the pack.

MADE IN CHINA for GSM Retail Group  
Mistral is a registered trademark of GSM Retail Group  
142-144 Fullarton Road, Rose Park, SA 5067



Cat. No. BSN595  
December 2025