

EASY INSTALLATION

1. Keep the locking piece up near the large white tabs at the top of the handles.

Do not push the locking piece down onto the handle teeth at this stage.

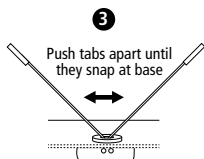
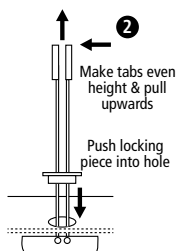
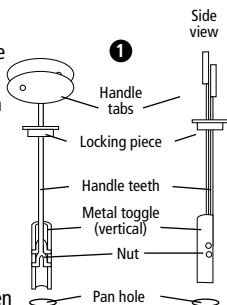
2. Tilt the metal toggle so that it is lying vertical against the white handles ❶, then push the metal toggle through the hole in the pan.

3. With the metal toggle now underneath the pan, align the handle tabs to an even height so that the metal toggle is sitting horizontal underneath the pan hole ❷.

4. Pull the handles upwards, whilst pushing the locking piece down into the pan hole ❸.

5. Press handles away from each other, breaking the handle flush with the locking piece ❹.

6. Trim excess if required. The metal toggle should now sit firmly against the bottom of the pan, providing a secure nut for the bolt to be screwed into.



Includes two plastic washers required for some Caroma® seat hinges. These can be discarded if they do not suit your seat hinge.



A family owned Australian business

Quality Assured Products
FIX-A-TAP® has been providing Australians with quality plumbing products since 1972.



FIX-A-TAP®
AUSTRALIA PTY LTD

The Ultimate Plumbing Solution

PO Box 200 Wahroonga
NSW Australia 2076
Made in China ©2025

www.fixatap.com.au

Visit our website for socials,
plumbers, product info & more

