



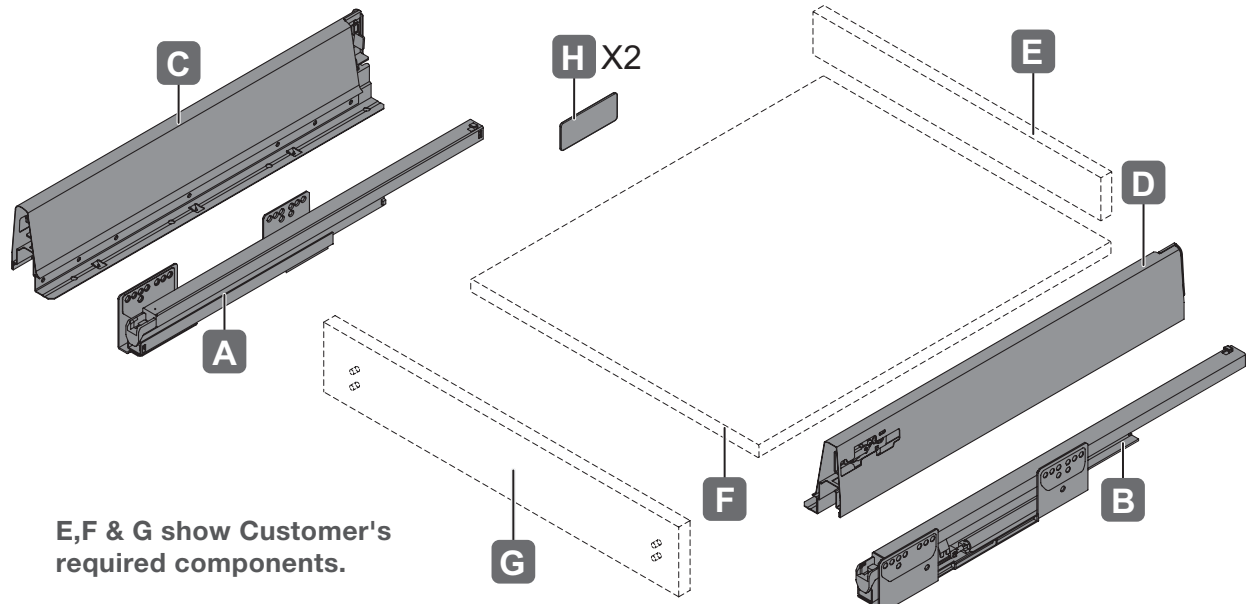
732.25.602

## ALTO SOFT CLOSE DRAWER

### INSTALLATION INSTRUCTIONS

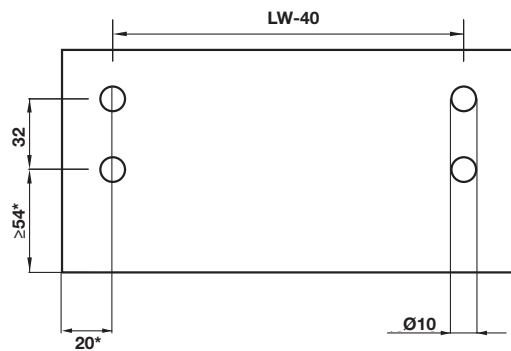


#### WHAT'S IN THE BOX

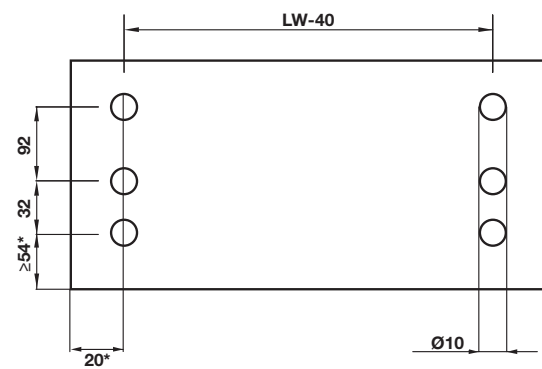


#### DRAWER FRONT DRILLING

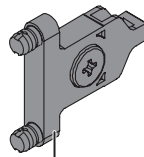
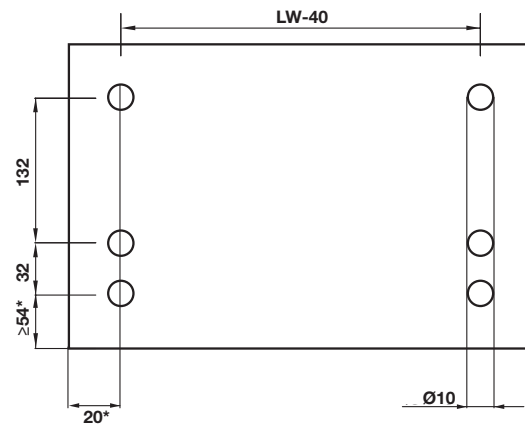
Alto 86 mm



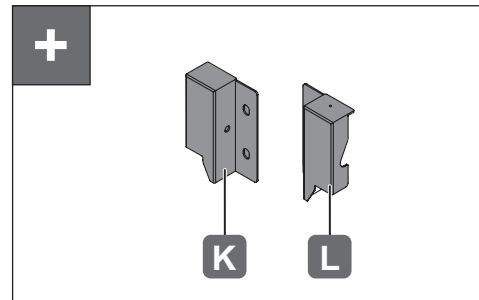
Alto 164 mm



Alto 204 mm



J X2



\*plus overlay

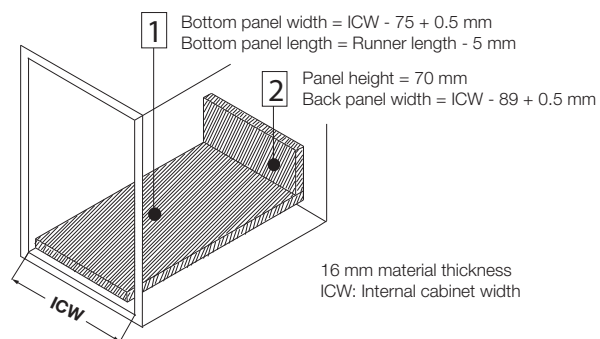
Dimensions in mm Dimensional data not binding, images are for illustrative purposes only. We reserve the right to alter specifications without notice.



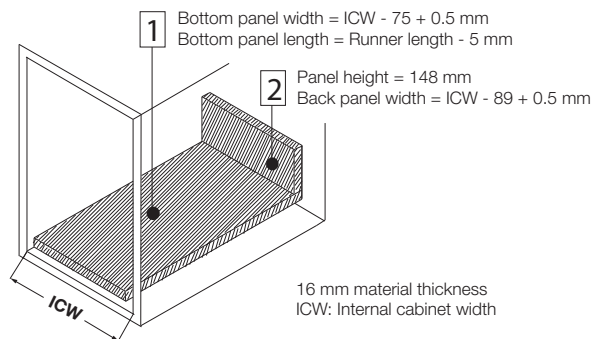
# ALTO SOFT CLOSE DRAWER

## TECHNICAL INFORMATION

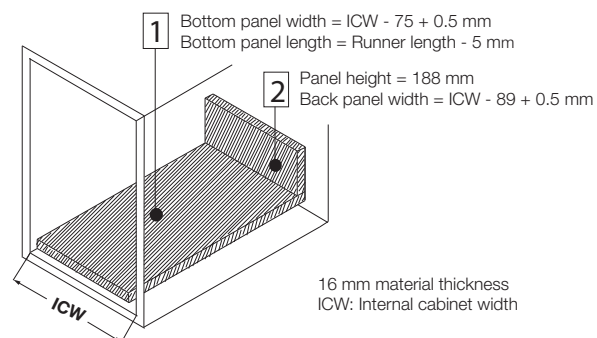
### Cutting dimensions - Alto 86 Drawer



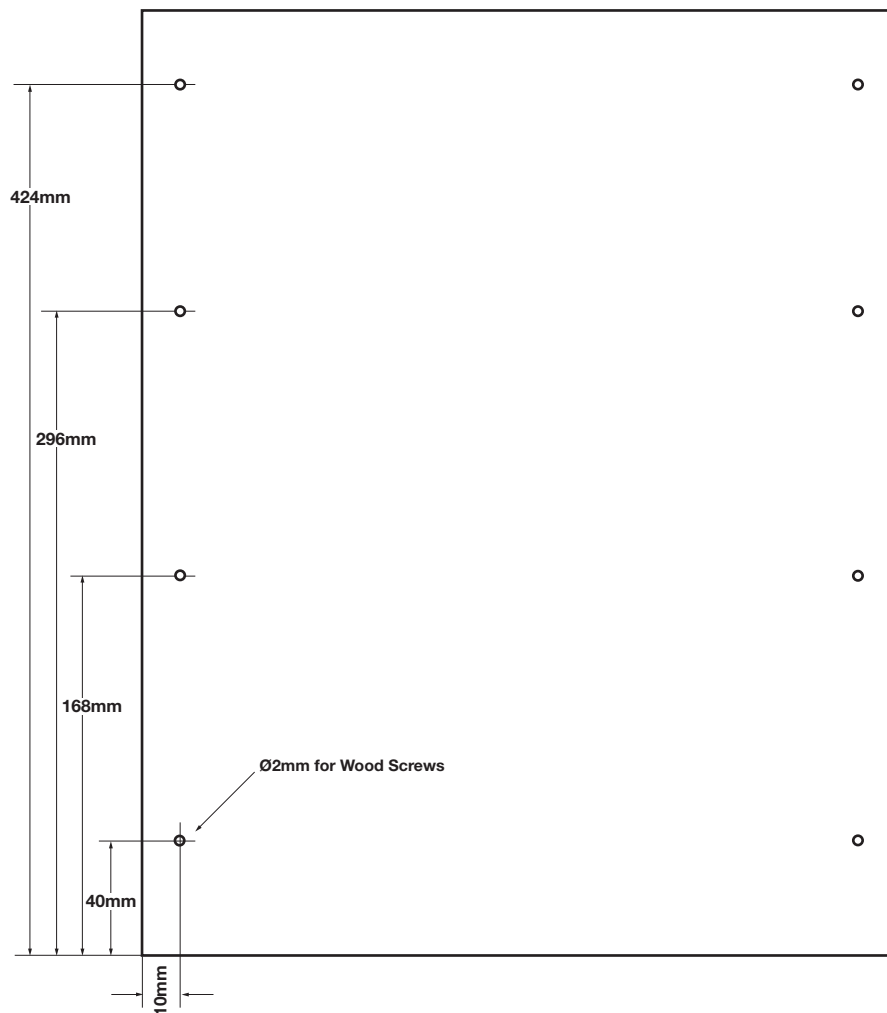
### Cutting dimensions - Alto 164 Drawer



### Cutting dimensions - Alto 204 Drawer



### Drawer Base Drilling



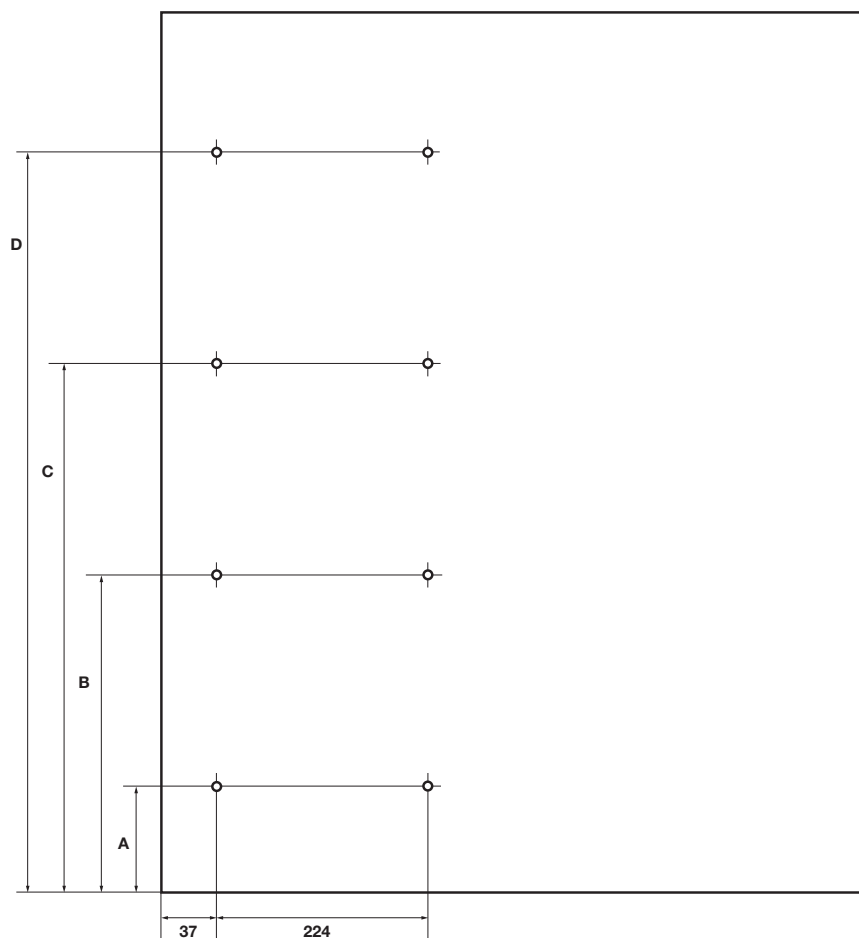
Dimensions in mm. Dimensional data not binding. Images are for illustrative purposes only. We reserve the right to alter specifications without notice.



## ALTO SOFT CLOSE DRAWER

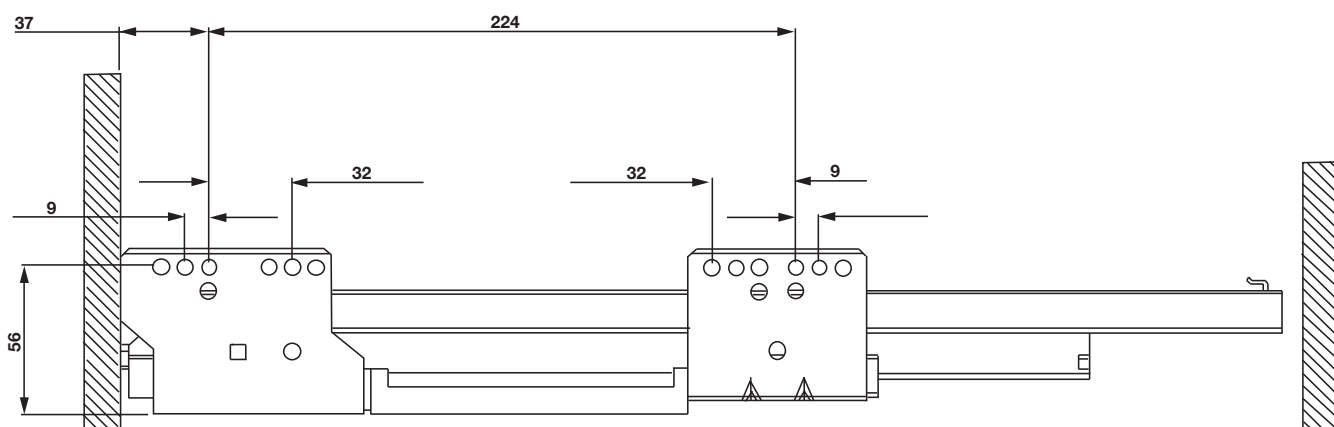
### TECHNICAL INFORMATION

#### Cabinet End Panel Drilling Dimensions (mm)



- Dimension A** = 56 mm plus overlay
- Dimension B** = Dimension A plus drawer front plus gap
- Dimension C** = Dimension B plus drawer front plus gap
- Dimension D** = Dimension C plus drawer front plus gap

#### Runner Drilling Dimensions (mm). Minimum installation depth 510 mm.



Use additional screws supplied to self drill into each front and rear runner brackets for extra fixing strength.

Dimensions in mm Dimensional data not binding, images are for illustrative purposes only. We reserve the right to alter specifications without notice.

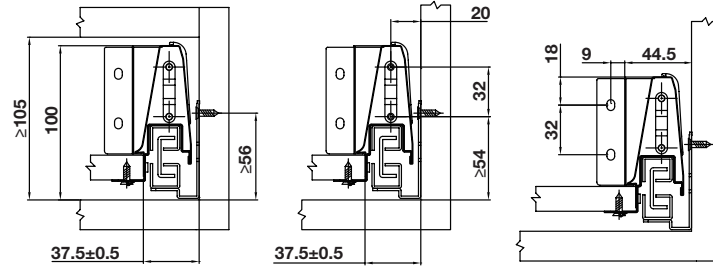


# ALTO SOFT CLOSE DRAWER

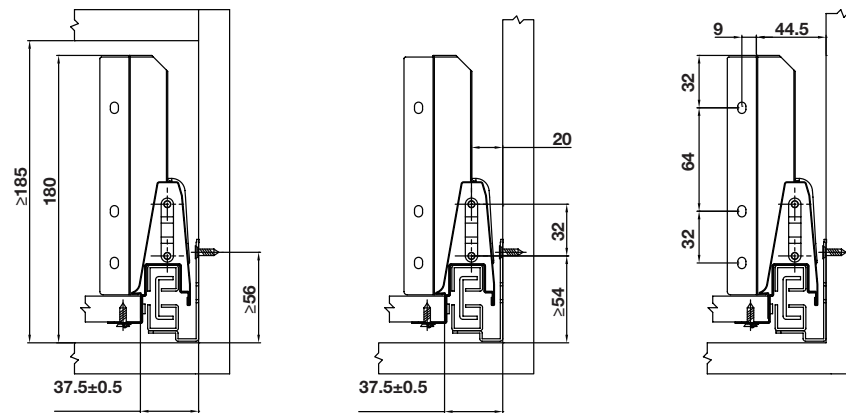
## INSTALLATION INSTRUCTIONS



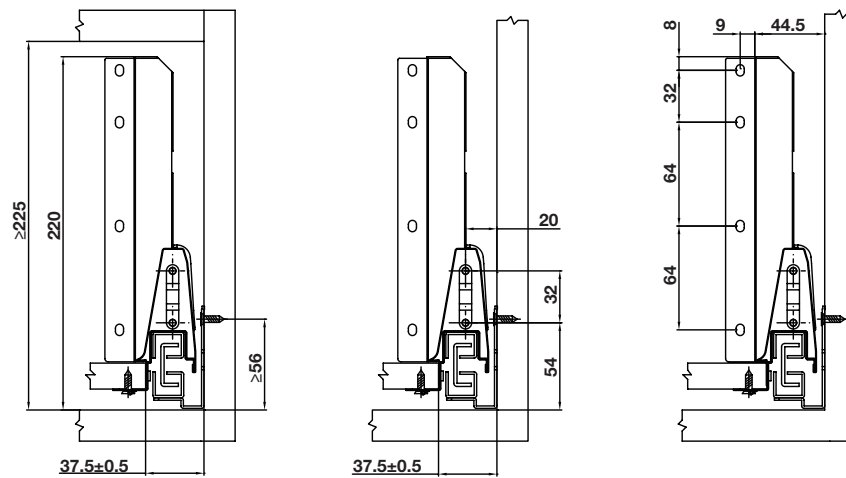
### 86 MM DRAWER SIDE DIMENSIONS



### 164 MM DRAWER SIDE DIMENSIONS



### 204 MM DRAWER SIDE DIMENSIONS



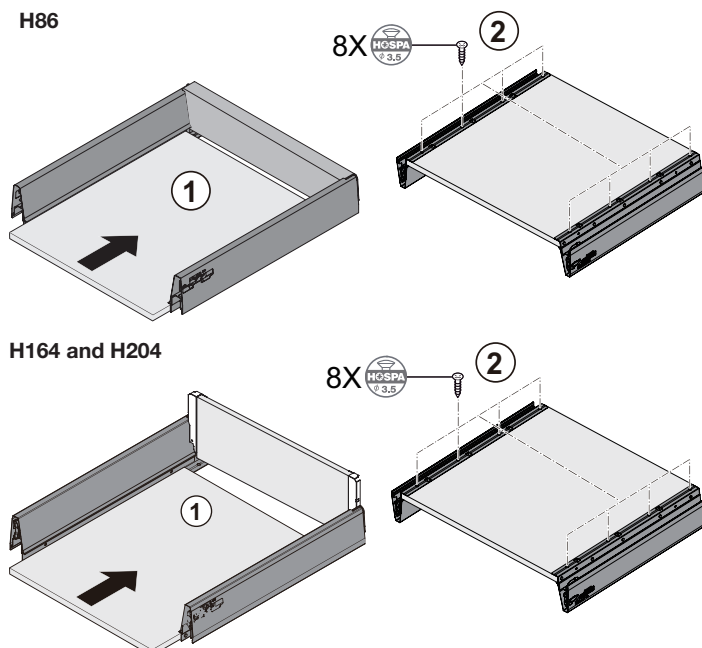
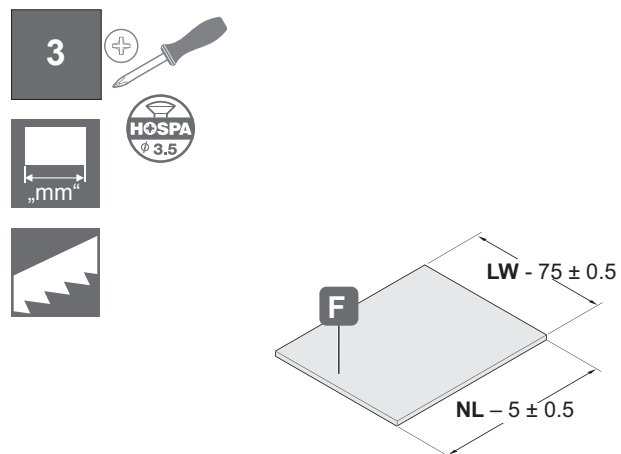
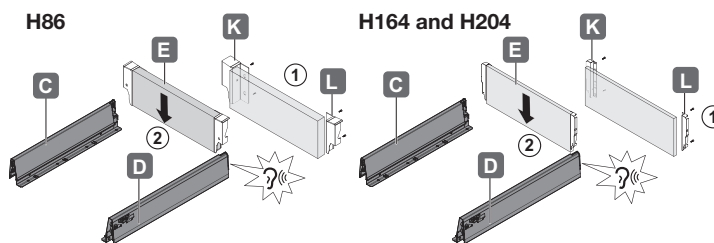
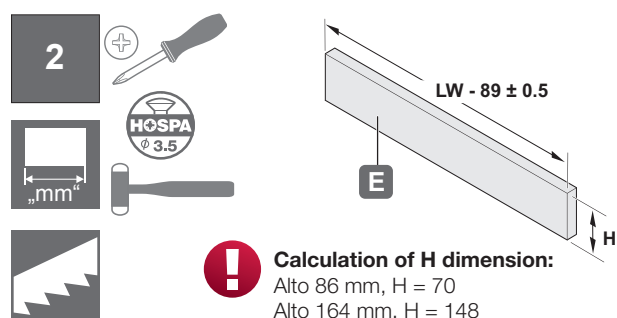
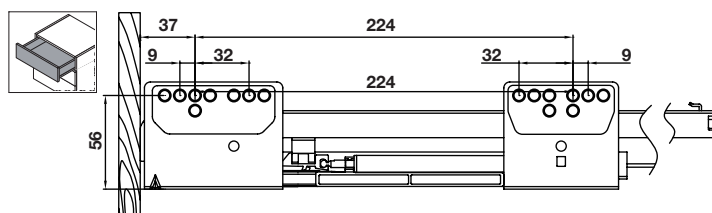
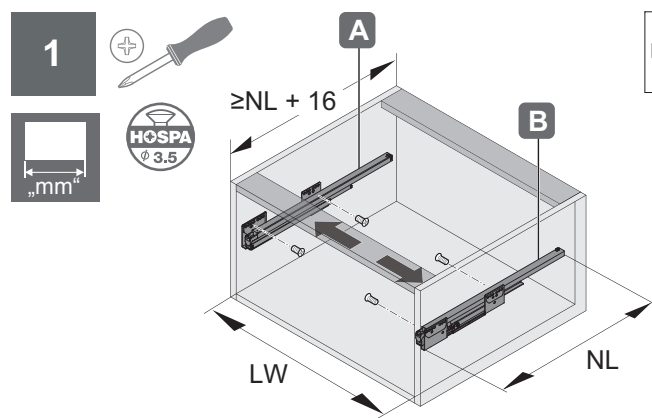
Dimensions in mm. Dimensional data not binding. Images are for illustrative purposes only. We reserve the right to alter specifications without notice.





## ALTO SOFT CLOSE DRAWER

### INSTALLATION INSTRUCTIONS



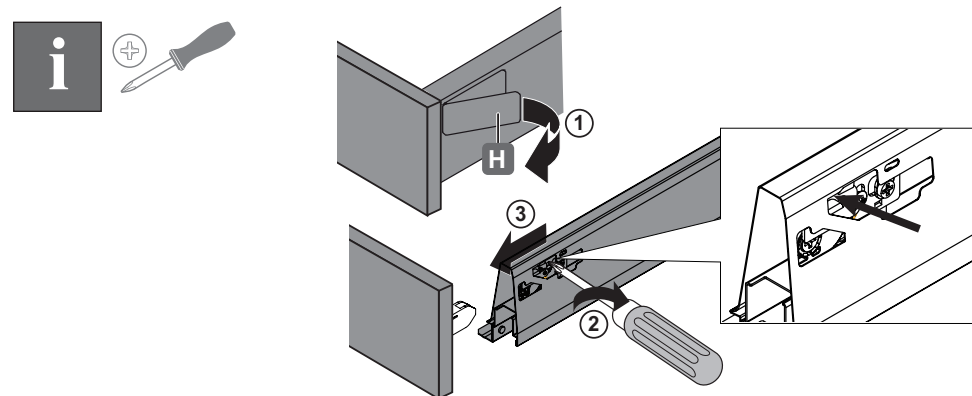
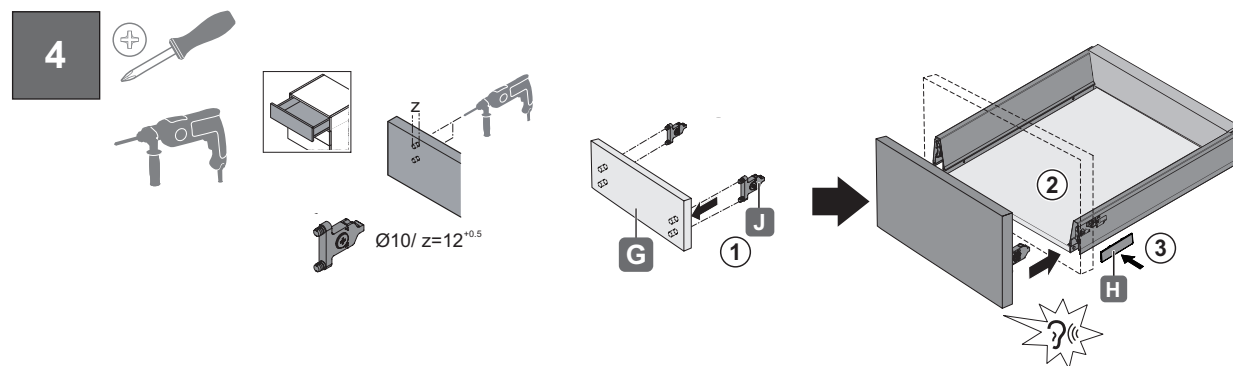
**!** **Note:**  
 Dimensions based on 16 mm board thickness

Dimensions in mm Dimensional data not binding, images are for illustrative purposes only. We reserve the right to alter specifications without notice.



# ALTO SOFT CLOSE DRAWER

## INSTALLATION INSTRUCTIONS

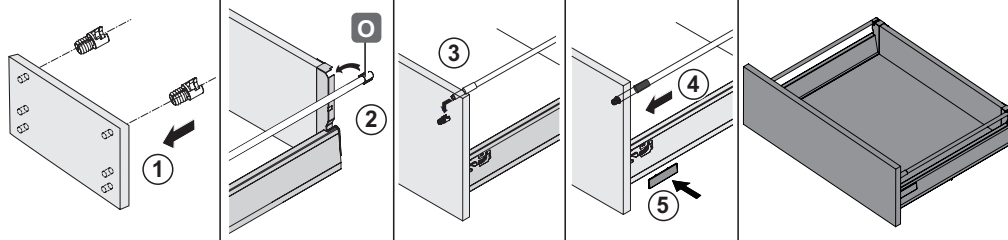


Dimensions in mm. Dimensional data not binding. Images are for illustrative purposes only. We reserve the right to alter specifications without notice.

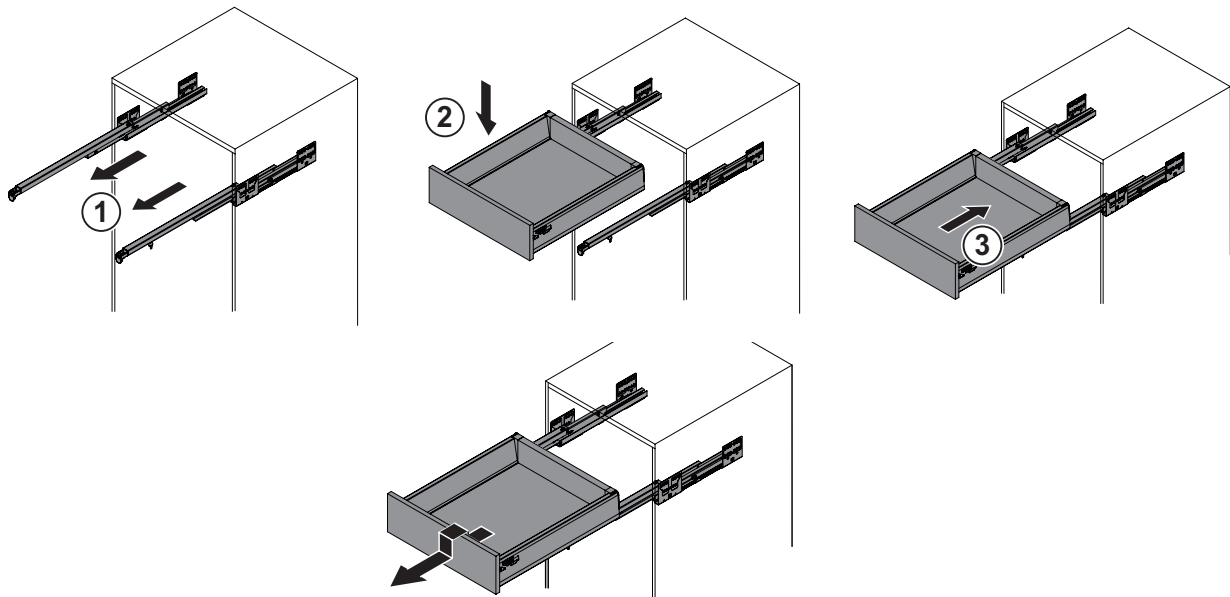


## ALTO SOFT CLOSE DRAWER INSTALLATION INSTRUCTIONS

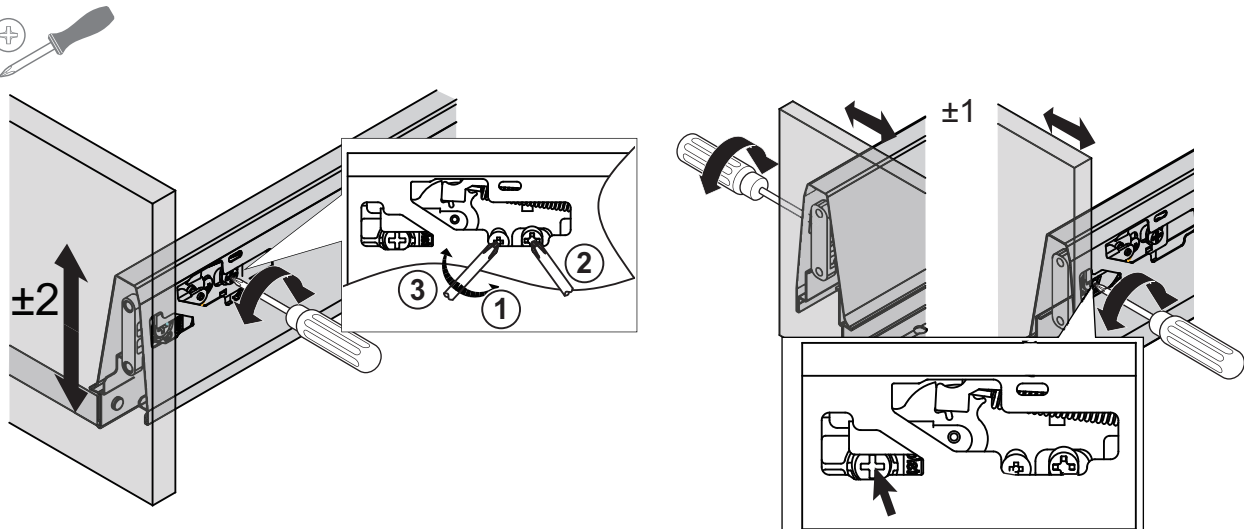
### 5 (APPLIES ONLY TO H164 AND H204)



### 6



Dimensions in mm Dimensional data not binding, images are for illustrative purposes only. We reserve the right to alter specifications without notice.





**REQUIRED TOOLS:**

- > Power Drill
- > PZ 2 Screw Bit
- > PZ 2 Screwdriver
- > 2mm Ø Drill Bit
- > 10mm Ø Drill Bit

